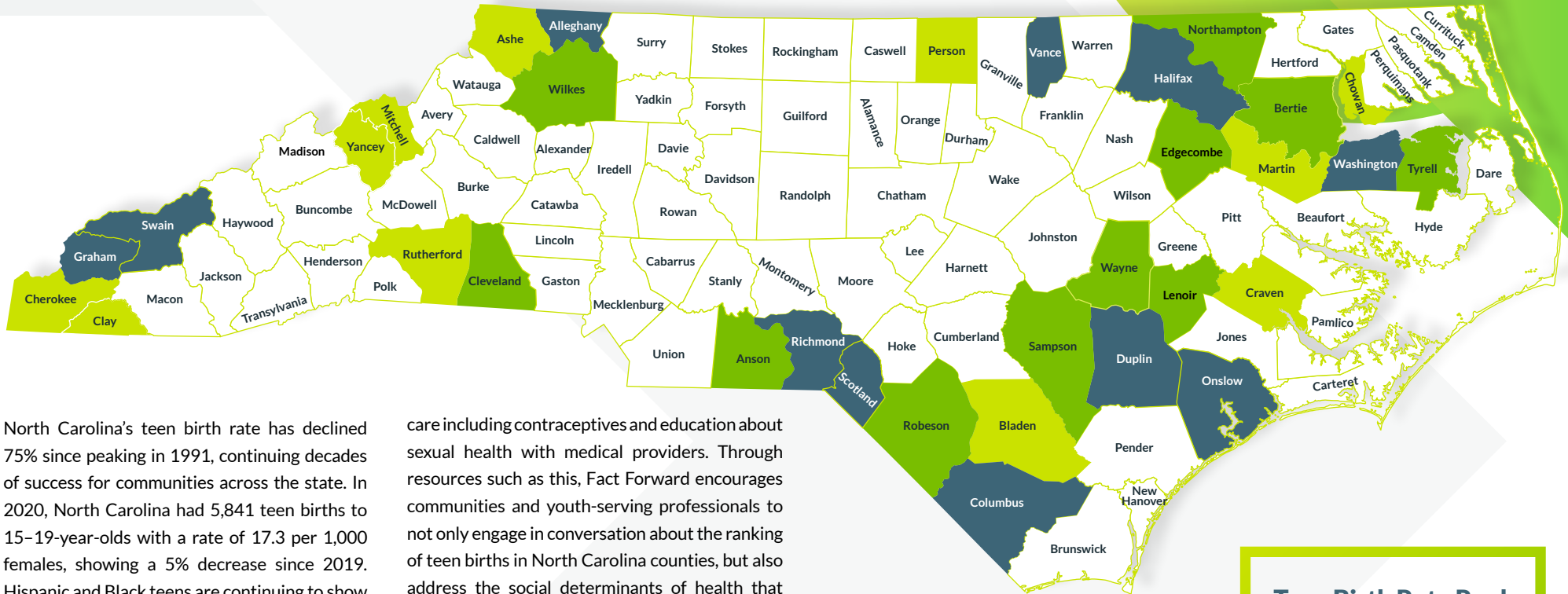


2020 North Carolina Teen Birth Trends



North Carolina’s teen birth rate has declined 75% since peaking in 1991, continuing decades of success for communities across the state. In 2020, North Carolina had 5,841 teen births to 15–19-year-olds with a rate of 17.3 per 1,000 females, showing a 5% decrease since 2019. Hispanic and Black teens are continuing to show a high rate of teen births well above the state rate, with Hispanic teens having a birth rate of 33.0 and Black teens with a rate of 24.0 per 1,000, compared to White teens with a rate of 12.0 per 1,000.

These disparities are potentially accounted for by structural barriers that create higher rates of poverty and unemployment, and lower education levels among people of color. Poverty and unemployment can lead to an inability to pay for medical care, which limits access to preventative

care including contraceptives and education about sexual health with medical providers. Through resources such as this, Fact Forward encourages communities and youth-serving professionals to not only engage in conversation about the ranking of teen births in North Carolina counties, but also address the social determinants of health that influence unintended teen births in our state.

Teen Births in North Carolina, Girls 15-19, 2020. Power to Decide. Retrieved from [powertodecide.org/what-we-do/information/national-state-data/north-carolina](https://www.powertodecide.org/what-we-do/information/national-state-data/north-carolina).

Teen birth rates for age group 15–19 in the United States by county, 2003–2020. National Center for Health Statistics. Retrieved from <https://www.cdc.gov/nchs/data-visualization/county-teen-births/index.htm#citation>

North Carolina Reported Pregnancies (2020). North Carolina Dept of Health and Human Services. Retrieved from <https://schs.dph.ncdhhs.gov/data/vital/pregnancies/2020/Table5Rev-2020-totalbirthscounty.pdf>

Teen Birth Rate Rank

- 1-11 (WORST)
- 12-23
- 24-34
- 35-46 (BEST)

Note: Rankings are based on teen birth rates for 15-19 year olds. 1 = Worst, 50 = Best

COUNTY	Cases	Rate	Rank
Alamance County	101	14.5	80
Alexander County	21	18.3	62
Alleghany County	6	34.1	9
Anson County	26	31.9	15
Ashe County	29	25.1	28
Avery County	11	18	64
Beaufort County	33	21.4	46
Bertie County	14	28.6	21
Bladen County	24	26.7	25
Brunswick County	59	21.8	45
Buncombe County	93	13.9	84
Burke County	52	24.1	34
Cabarrus County	103	12.7	87
Caldwell County	52	23.6	37
Camden County	4	6.5	98
Carteret County	23	12.6	88
Caswell County	10	19.8	54
Catawba County	78	16.2	73
Chatham County	21	9.1	94
Cherokee County	16	24.7	32
Chowen County	14	24.8	31
Clay County	6	25.9	26
Cleveland County	78	27.9	22
Columbus County	56	33.2	11
Craven County	69	24.1	34
Cumberland County	256	24	36
Currituck County	13	9	96
Dare County	9	11.1	92
Davidson County	102	20.2	53
Davie County	15	14.2	82
Duplin County	72	37.9	2
Durham County	154	14.6	79
Edgecombe County	50	30.6	19
Forsyth County	232	16.2	73
Franklin County	50	18.5	61
Gaston County	124	19.5	56
Gates County	4	17.4	69
Graham County	12	36.8	5
Granville County	22	15.5	77
Greene County	13	25.1	28
Guilford County	250	12	90
Halifax County	51	33.4	10
Harnett County	91	19.4	57
Haywood County	23	16.6	71
Henderson County	62	18	64
Hertford County	17	13.7	85

Note: Rate is calculated per 100,000 15-19 year olds. * represents cases less than 5

COUNTY	Cases	Rate	Rank
Hoke County	31	20.3	51
Hyde County	3	19.2	58
Iredell County	78	13.2	86
Jackson County	20	11.7	91
Johnston County	122	16.1	76
Jones County	5	18.2	63
Lee County	48	22.8	39
Lenoir County	54	31.7	16
Lincoln County	50	18.8	60
McDowell County	21	22.4	42
Macon County	15	22.4	42
Madison County	12	17.9	67
Martin County	14	26.8	24
Mecklenburg County	594	16.2	73
Mitchell County	8	25.5	27
Montgomery County	18	22.7	40
Moore County	52	16.6	71
Nash County	68	21.4	46
New Hanover County	70	9.1	94
Northampton County	17	30.7	18
Onslow County	182	36.3	7
Orange County	19	2.9	99
Pamlico County	6	17.7	68
Pasquotank County	26	18	64
Pender County	21	15.2	78
Perquimans County	6	21.2	48
Person County	17	24.9	30
Pitt County	99	12.6	88
Polk County	7	16.7	70
Randolph County	90	19.7	55
Richmond County	65	39.2	1
Robeson County	154	32.2	13
Rockingham County	66	21.2	48
Rowan County	85	20.3	51
Rutherford County	45	24.3	33
Sampson County	70	32.6	12
Scotland County	27	37.1	4
Stanly County	32	18.9	59
Stokes County	14	14.4	81
Surry County	47	23.3	38
Swain County	10	36.8	5
Transylvania County	7	14	83
Tyrrell County	4	31.4	17
Union County	85	7.8	97
Vance County	54	35.3	8
Wake County	391	9.4	93

Note: Rate is calculated per 100,000 15-19 year olds. * represents cases less than 5

2020 North Carolina Teen Birth Rates by County - Ages 15-19

COUNTY	Cases	Rate	Rank
Warren County	10	20.4	50
Washington County	13	37.7	3
Watauga County	9	2.8	100
Wayne County	114	27.8	23
Wilkes County	64	32	14
Wilson County	53	22.5	41
Yadkin County	17	22.3	44
Yancey County	10	29.5	20
North Carolina	5841	17.3	

Note: Rate is calculated per 100,000 15-19 year olds. * represents cases less than 5